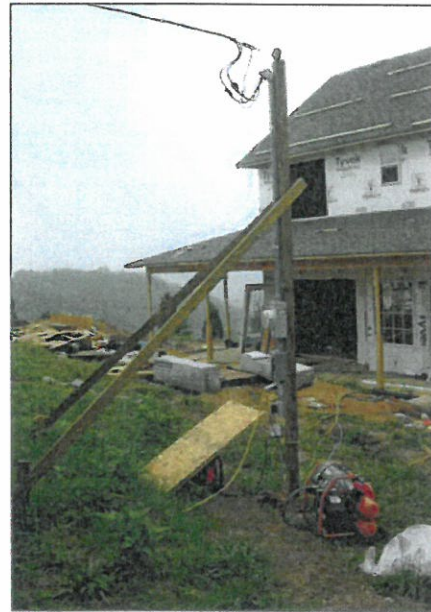
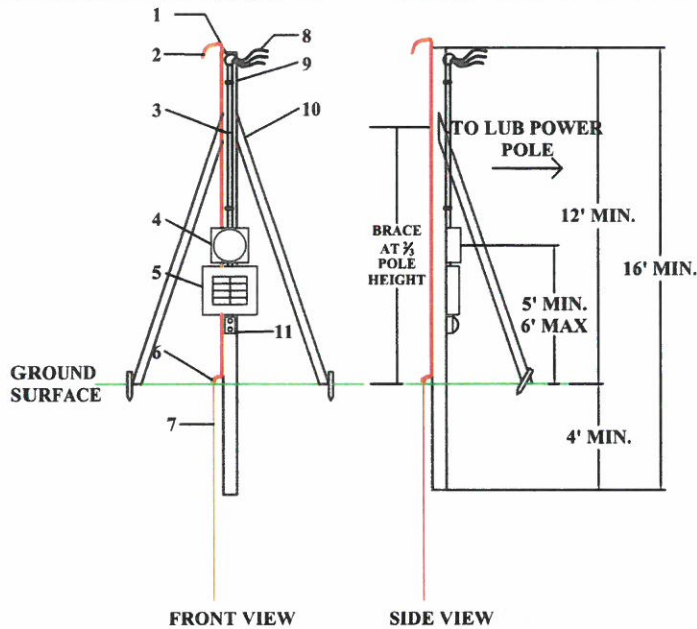


# TEMPORARY POLE

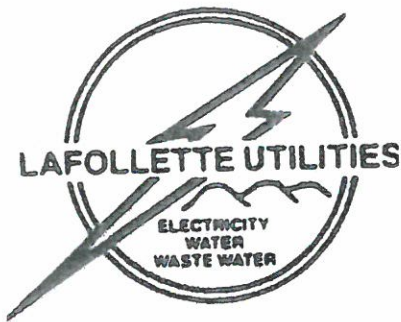


P.O. Box 1411  
302 North Tennessee Ave.  
LaFollette, TN 37766  
(423) 562-3316  
1-800-352-1340



**\* POLE LOCATIONS MUST BE DETERMINED BY LUB ENGINEERING DEPARTMENT. PLEASE CONTACT LUB ENGINEERING DEPARTMENT TO SPOT LOCATION 3 - 5 DAYS IN ADVANCE OF POLE INSTALLATION.**

1. WEATHERHEAD
2. #4 BARE COPPER GROUND STAPLED TO POLE FROM GROUND ROD TO WEATHERHEAD
3. CONDUIT CLAMP
4. METER BASE (APPROX. 5'-6" FROM GROUND LEVEL)
5. BREAKER BOX OR DISCONNECT PANEL (MUST HAVE PROVISIONS FOR EXTERNAL CIRCUITS)
6. ONE PIECE GROUND ROD CLAMP
7. 8' GROUND ROD
8. FOR 60 AMP: 18" TAILS, MARK NEUTRAL WITH WHITE TAPE OR USE WHITE INSULATED WIRE  
2, #6 STRANDED COPPER  
1, #8 STRANDED COPPER  
1" STEEL CONDUIT OR SCHEDULE 40 PVC
- FOR 100 AMP: 18" TAILS, MARK NEUTRAL WITH WHITE TAPE OR USE WHITE INSULATED WIRE  
2, #4 STRANDED COPPER  
1, #6 STRANDED COPPER NEUTRAL  
1½" STEEL CONDUIT OR SCHEDULE 40 PVC
- FOR 200 AMP: 18" TAILS, MARK NEUTRAL WITH WHITE TAPE OR USE WHITE INSULATED WIRE  
2, 2/0 COPPER OR 2, 4/0 ALUMINUM  
1, 1/0 COPPER NEUTRAL OR 1, 2/0 ALUMINUM  
2" STEEL CONDUIT OR SCHEDULE 40 PVC
9. 16' OR 20' POLE, 4" X 4" OR 6" X 6" (PRESSURE TREATED), 4' IN GROUND (WITH BRACES)
10. TEMPORARY POLE BRACE (MINIMUM LENGTH = 12')
11. ALL OUTLETS (120V AND 240V) MUST BE GFCI PROTECTED WITH WEATHERPROOF COVER



- **POLE LOCATIONS MUST BE DETERMINED BY LUB ENGINEERING DEPARTMENT.** LaFollette Utilities cannot pull service wires over the top of buildings or structures. Please contact our Engineering Department for assistance on placing your pole in the proper location.
- LaFollette Utilities has issued this as a **guide only**, and assumes no responsibility for poor workmanship or misinterpretation on the part of the customer or the electrical contractor. Some installations may have special requirements. **If you have any questions concerning assembly or wiring, please make arrangements to contact the State Electrical Inspector through our office at 423-562-3316 or 1-800-352-1340.**
- **All wiring must be inspected and passed by the State Electrical Inspector and all fees paid before any construction will occur.**
- The pole must be inspected and passed by the State Electrical Inspector each time the pole is used.
- Pole must be 4' in the ground, and there must be 12' of clearance from the ground level to the weatherhead or driplloop.
- Place the pole no more than 50' from the transformer pole or service pole, unless prior permission from the Engineering Department has been obtained.