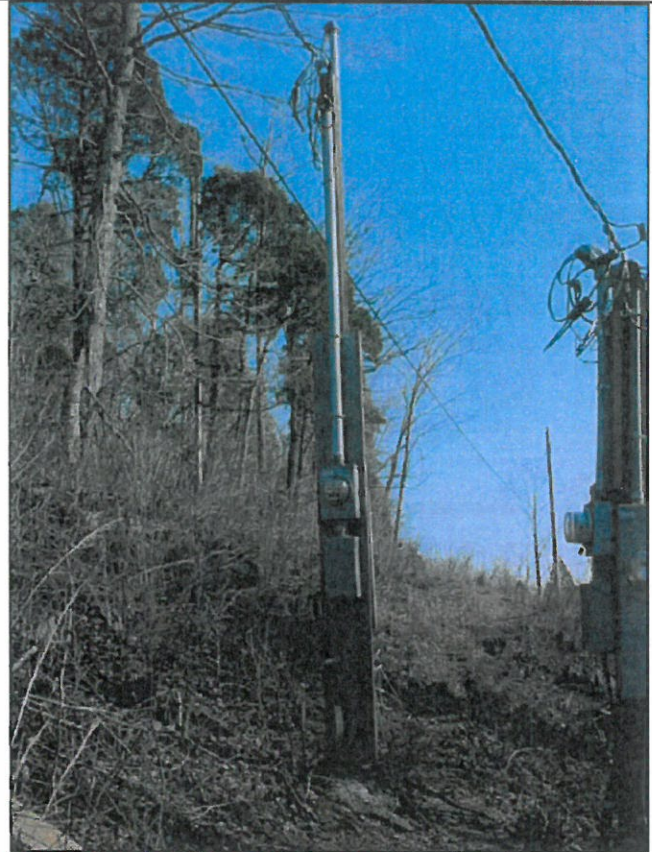
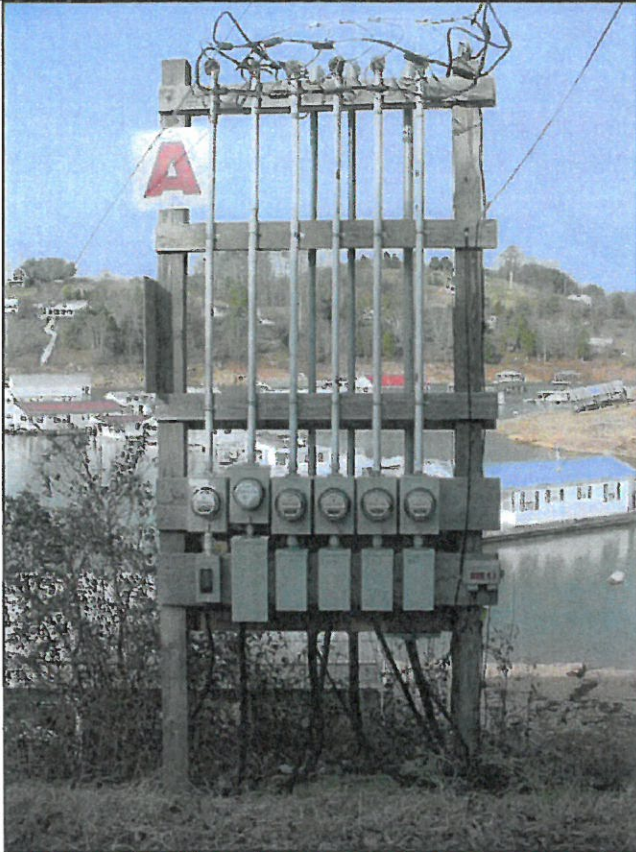


HOUSEBOAT SERVICE

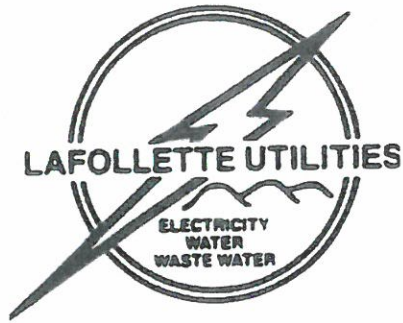


P.O. Box 1411
302 North Tennessee Ave.
LaFollette, TN 37766
(423) 562-3316



*** POLE LOCATIONS MUST BE DETERMINED BY LUB ENGINEERING DEPARTMENT. PLEASE CONTACT LUB ENGINEERING DEPARTMENT TO SPOT LOCATION 3 - 5 DAYS IN ADVANCE OF POLE INSTALLATION.**

1. 18" TAILS, MARK NEUTRAL WITH WHITE TAPE OR USE WHITE INSULATED WIRE
2, 2/0 COPPER, OR 2, 4/0 ALUMINUM RHH OR RHW
1, 1/0 COPPER NEUTRAL, OR 1, 2/0 ALUMINUM RHH OR RHW
2. #4 BARE COPPER GROUND FROM GROUND ROD TO WEATHERHEAD
3. 2" CONDUIT STEEL OR SCHEDULE 80 PVC BELOW METER BASE SCHEDULE 40 PVC ABOVE METER BASE AND IN THE GROUND.
4. CONDUIT CLAMP
5. 200 AMP METER BASE (MINIMUM OF 100 AMP SERVICE)
6. 200 AMP MOBILE HOME DISCONNECT PANEL (MUST HAVE PROVISIONS FOR EXTERNAL CIRCUITS)
7. ONE PIECE GROUND ROD CLAMP
8. 90 DEGREE SWEEP L
9. 8' GROUND ROD
10. WEATHERHEAD
11. 16' OR 20', 6" X 6" (PRESSURE TREATED) POLE
12. 2, 2/0 COPPER WITH 1, 1/0 COPPER NEUTRAL, OR 2, 4/0 ALUMINUM WITH 1, 2/0 ALUMINUM
13. CABLE GOING TO HOUSEBOAT MUST BE OF THE GC TYPE.



- **POLE LOCATIONS MUST BE DETERMINED BY LUB ENGINEERING DEPARTMENT.** Please contact our Engineering Department for assistance on placing your pole in the proper location.
- LaFollette Utilities has issued this as a **guide only**, and assumes no responsibility for poor workmanship or misinterpretation on the part of the customer or the electrical contractor. Some installations may require special requirements. **If you have any questions concerning assembly or wiring, please make arrangements to contact the State Electrical Inspector through our office at 423-562-3316 or 1-800-352-1340.**
- **All wiring must be inspected and passed by the State Electrical Inspector and all fees paid before any construction will occur.**
- The pole must be inspected and passed by the State Electrical Inspector each time the pole is used.
- All houseboats must use a **NEW TREATED POLE.**
- Pole must be 6" diameter or larger.
- Pole must be at least 16' long. We recommend a 16' or 20', 6" X 6" (pressure treated) pole from one of the local lumber stores.
- Pole must be 4' in the ground, and there must be 12' of clearance from the ground level to the weatherhead.
- Pour concrete around the base of the pole.